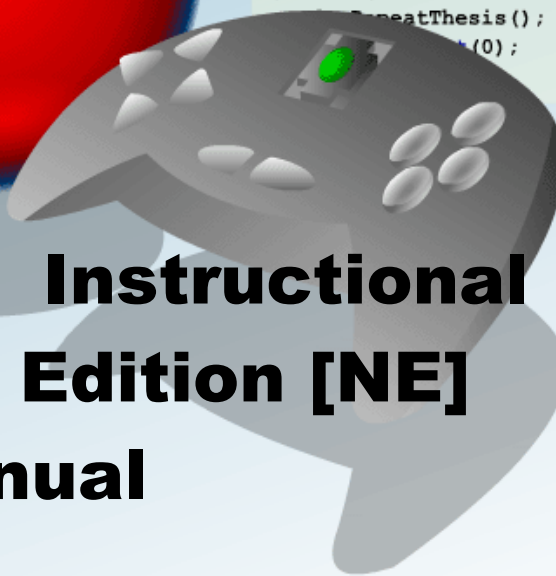




```
if (bThesisApproved)
{
    nWhole = (random(2)+1);
    nDec = (random(3)+1)/4;
    nGrade = nWhole+nDec;
    bGraduate = true;
    if ((random(25)+75)>90)
        bLikha = true;
    sndOK.start(0);
} else {
    RepeatThesis();
    sndOK.start(0);
}
```



Geez0ft Instructional Guide

Network Edition [NE]

User Manual

Version 2.3.3
July 20, 2005

Legal Notice

Copyright © 2005 Grupzer0. All rights reserved.

Geez0ft and Grupzer0 are trademarks of Grupzer0 Studios. Other product and company names mentioned herein may be trademarks or trade names of their respective owners.

Disclaimer

The information in this document is provided "as is," with no warranties whatsoever. This document is provided for informational purposes only.

License

A license is hereby granted to print a copy of this document. No other license to any other intellectual property rights is granted herein.

I. Introduction

This document describes how to install Geez0ft (pronounced as 'gee-soft') Instructional Guide Network Edition (or simply, Geez0ft).

The Geez0ft Setup is provided as a single, self-extracting executable file.

The following steps will guide the installation and setting up of the Geez0ft on your PC. The installation package contains four (3) Geez0ft Executable files, namely, Server, Client and Recover; a number of Geez0ft required files; this user manual and an uninstaller.

1.1 What Do You Need to Install and Use Geez0ft?

This chapter lists the minimum hardware and software requirements for successfully installing and running Geez0ft as a standalone application.

1.1.1 Hardware Requirements

The minimum hardware requirements for installing and running the Geez0ft are as follows:

- 853 MHz AMD Duron processor (1.81 GHz Pentium 4 is recommended)
- 128 MB RAM (256 MB is recommended)
- 30 MB available disc space
- 16 bit colors, 800x600 pixel display (32 bit colors, 1024x786 pixel is recommended)
- 8x CD-ROM Drive
- Keyboard and mouse

1.1.2 Software Requirements

The software requirements for installing and running Geez0ft are as follows:

- Microsoft Windows XP/Windows 2000 Operating System (OS) (Although, it should be possible for Windows 98 to run Geez0ft. But, since Geez0ft was developed on Windows XP and it's not yet tested on any Windows OS other than Windows XP and Windows 2000, it is recommended to have a Windows XP OS for program-OS compatibility.)
- Macromedia Flash Player 7 ActiveX (higher versions are recommended.)
- Microsoft Visual Basic 6 Runtime (SP6-supported Runtime is recommended)
- Browser (A JavaScript-enabled browser is recommended to properly view an HTML version of this User Manual.)

1.2. Installing Geez0ft Instructional Guide

The Microsoft Windows XP is a legal copyright of Microsoft. With this, Windows XP is not bundled with the Geez0ft Setup to avoid legal issues. It is not recommended that you buy a copy of Windows XP. Also, it is *NOT* recommended that you reformat your PC and shift to Windows XP just to use this Instructional Guide.

In case you got other Microsoft Windows OS (preferably NT's), we, the Geez0ft developers, suggest that you just try to install Geez0ft to see if it runs just right. We assure you that there should be no fatal error that could cause a computer breakdown in case of program-OS incompatibility.

80% of Geez0ft was developed using Macromedia Flash MX Professional 2004, a version of Flash that needs Flash Player 7 ActiveX in order for it to run. Thus making that, ActiveX control, part of Geez0ft's runtime support.

The remaining 20% of Geez0ft was developed using Microsoft Visual Basic 6. This makes VB Runtime required prior to running Geez0ft.

A JavaScript-enabled browser is available if your OS is XP or higher. Microsoft Internet Explorer versions 5 or higher should be JavaScript-enabled. You can download free browsers from the Internet, most of which are Java-enabled, just type-in the word, "free+javascript+enabled+browser", in the search textbox.

The Geez0ft installation order is the following:

1. Microsoft Windows XP
2. Macromedia Flash Player 7 ActiveX
3. Microsoft Visual Basic 6 Runtime
4. Geez0ft Instructional Guide
5. JavaScript-enabled browser (optional)

1.2.1 Installing the Microsoft Windows XP

If you already are using Windows XP or Windows 2000, skip to installing Geez0ft. And as for the others read the directions carefully. Again, it is not recommended that you reformat your PC and shift to Windows XP.

For Windows 95 and Windows 98 users, maybe it is time for you to upgrade ^_^ . Just put the Microsoft Windows CD on your CD-ROM drive and follow the instructions. Read carefully.

For the non-Windows 95 and non-Windows 98 users, try to install Geez0ft CD first. You might not need Windows XP be installed.

1.2.2 Installing Macromedia Flash Player ActiveX

To run Geez0ft, you need to have a Macromedia Flash Player 7 ActiveX on your computer. If you are not sure if you already have Flash Player ActiveX, try doing the following procedures.

1. Run Geez0ft Setup (read *Installing Geez0ft*).

2. Choose Client Package then continue with the installation.
3. After installing, open Flash Player Detection from the Windows Start Menu, located at Geez0ft Instructional Guide [NE] folder by default.

If it tells you that no Flash Player detected, follow the next procedures below.

If your browser (probably Internet Explorer) did not show any image, then you have to get Macromedia Flash Player. Luckily, you can download this for free from Macromedia. It can be found in this link: <http://www.macromedia.com/go/getflashplayer/>. Download time should not take longer than 10 minutes on 56kbps bandwidth.

Once downloaded, it should automatically install and update your browser. It might also need to Restart Windows. Allow it to Restart Windows for it to fully configure your updated browser. Then try to check if it just updated your browser by opening the Flash Player Detection from the Start Menu.

1.2.3 Installing Microsoft Visual Basic 6 Runtime

Geez0ft is dependent on Visual Basic Runtime. Without the runtime support of VB Runtime, Geez0ft will not run. You can get a free installer from this link:

<http://download.microsoft.com/download/vb60pro/Redist/sp5/WIN98Me/EN-US/vbrun60sp5.exe>

Once downloaded, open the installer and follow the procedures. It will require you to Restart Windows – let it Restart Windows.

1.2.4 Installing Geez0ft

Once you have Windows XP, Flash Player ActiveX and VB Runtime installed on your computer, you can start installing Geez0ft on your PC. Do the following:

1. Put the Geez0ft Setup Disc on your CD-ROM drive.
2. Geez0ft NE should be showing you the welcome screen. Click *Next* to continue until the License Agreement screen.

Read the License Agreement carefully. Decide if you agree or not. If you agree, click *Next* to continue until the Select Install Type screen.

3. Geez0ft NE should be offering you three kinds of Installation Type.

Common Files installs runtime files for Geez0ft to work.

Server Files installs all server files only.

Client Files installs all client files only.

Choose which suites your need but do not uncheck **Common Files**.

4. Now that all is set, Geez0ft Setup can start installing Geez0ft Instructional Guide. Click *Install* then wait for it to finish. It should take no longer than 10 minutes.

5. Once the installation is complete, the Geez0ft Setup informs you with the *Install Complete* dialog. Click *Finish* to exit.

1.3. Configuring Geez0ft Instructional Guide [NE]

To have the Network Edition of Geez0ft working, some configurations will be made.

The Geez0ft configuration order is the following:

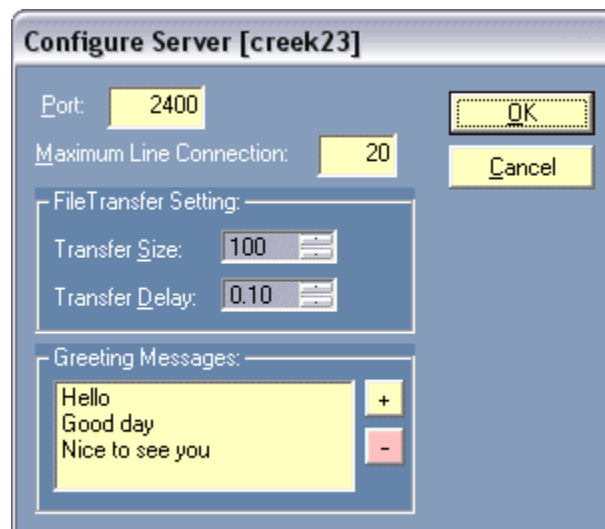
1. Geez0ft Server
2. Geez0ft Client

1.3.1 Configuring Geez0ft Server

Note: Only the Server station from the network shall have the Geez0ft Server installed. The Workstations will only require the Geez0ft Client. Thus, configuring Geez0ft Server will only be made on the Server station. The Server station is where you installed the Geez0ft Setup using the **Common Files** and **Server Files**.

1. From the Windows Start Up menu, locate the folder Grupzer0 > Geez0ft Instructional Guide > Flash MX 2004 Pro then click on Geez0ft Server's icon.
2. Geez0ft Server will be showing the configuration window with the header of the window as:

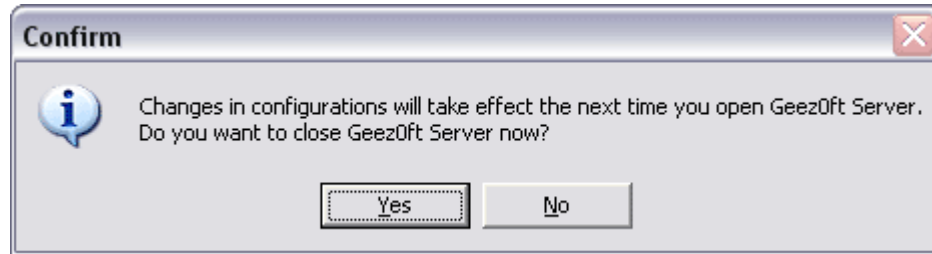
Configure Server[Server Station] where **Server Station** is the Computer Name of the Server Station.



The default Port will be 2400. The default Maximum Line Connection will be 20. The default Transfer Size will be 100 and Transfer Delay will be 0.10sec, and three (3) default Greeting Messages (*Hello*, *Good day* and *Nice to see you*).

For efficient File Transfer, configure File Transfer Setting according to your Local Area Network (LAN) Card capability and chosen Maximum Line Connection. (i.e. If your Network consists of 14 workstations, configure Maximum Line Connection to 14. Then if your LAN Card has a transfer rate of 10 mbps, choose 400 as Transfer Size then *click 400 to accept changes in Transfer Rate*; maintain the 0.10 Transfer Delay).

3. It is recommended to accept the default configuration for now. Press **OK** to continue. A message will prompt you saying:

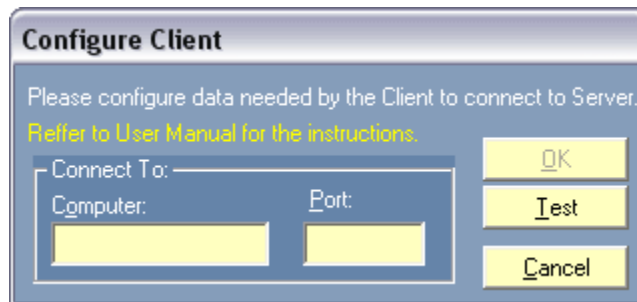


4. Press **Yes** for the default configuration to take effect and configuring is done.

1.3.1 Configuring Geez0ft Client

Note: Geez0ft Client will only be installed using **Common Files** and **Client Files**. All computers, which were installed with the two packages, are the ones need to be configured.

1. From the Windows Start Up menu, locate the folder *Geez0ft Instructional Guide [NE]* then click on Geez0ft Client's icon.
2. Geez0ft Client will be showing the configuration window.



There will be no default values. In this case, you need the help of the System Administrator to configure Geez0ft Client.

3. The value for the Computer will be the Computer Name from where Geez0ft Server was installed. This requires that you run the configured Geez0ft Server (Read *Running Geez0ft Server* under *Using Geez0ft Server*).
4. From the bottom of *Geez0ft Server Activities*, you should find the message:

#Server is running on Server Station where **Server Station** is the Computer where Geez0ft Server was installed.



Enter the **server station** value to Computer Name. Do not close Geez0ft Server.

5. The value for the Port should be the same with the chosen Port number of the Geez0ft Server when it was configured. To check for the Geez0ft Server's chosen

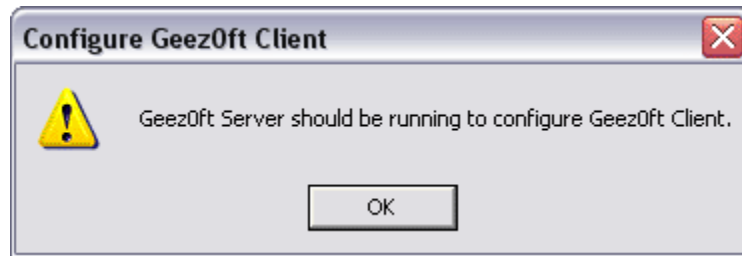
Port, you need to scroll up the Geez0ft Server Activities to the top. From there, you should find the message:

#Listening on Port *xxxx* where ***xxxx*** is the Geez0ft Server's chosen Port.

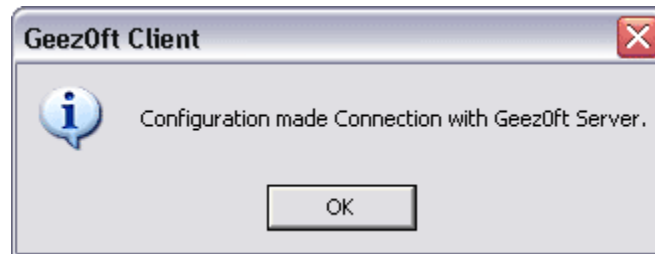
```
#App opened at 07/27/2009 2:03:20 PM
#Listening on Port 2400
#Accepting 20 Lines
```

Enter the ***xxxx*** value to Port Number.

6. While Geez0ft Server is running, press the *Test* button to test connection. The first message that will prompt is:



The message is to remind you that Geez0ft Server should be running to test connection. Press *OK* to continue then another message will prompt you saying:



Press *OK* for the configuration to take effect and configuring is done. If in case you got a different message, try to check if the Workstation and the Server Station are listed on the *same* Workgroup.

II. Using Geez0ft Instructional Guide [NE]

You are now ready to use Geez0ft Instructional Guide [NE]. But before doing so, please read this chapter before proceeding because Geez0ft has three (3) different executable files. And this chapter will discuss "What are these 3 executable files?", "What are its use?" and "How to use?".

1. Geez0ft Server

Geez0ft Server is the main executable file of Geez0ft Instructional Guide. Without it, it is remotely impossible that Geez0ft Client will run. Geez0ft Server is used to create a virtual room for Geez0ft Client to use as its virtual classroom.

1.1 Running Geez0ft Server

Geez0ft Server was designed to be a CD-dependent application. The following steps will teach you how to run Geez0ft Server.

1. To run Geez0ft Server, place the Geez0ft Installation Disc then open Geez0ft Server from Windows Start Up Menu.
2. Once opened and no problem was encountered, all should be fine and a virtual room should be available for Geez0ft Client.

Messages indicating what the Geez0ft Server is currently doing should appear from the white area, which is called, *Geez0ft Server Activities*.

3. Minimize Geez0ft Server by *clicking on its icon from the taskbar*.

1.2 Using Geez0ft Server

By opening Geez0ft Server, you are already using Geez0ft Server. Geez0ft Server was designed to be an unattended application. Still other buttons were integrated to help optimize Geez0ft Server. These buttons are Clear, Configure and User button.

The **Clear** button's primary use is to erase the events written inside Geez0ft Server Activities and will be written to GSLog.log text file, which can be viewed using the Notepad. This log file will be helpful to trace any error that Geez0ft has encountered. Clearing the Geez0ft Server Activities can lessen the RAM usage of Geez0ft Server.



The **Configure** button will show the Configure window of Geez0ft Server. Read *Configuring Geez0ft Server* for further information.



The **User** button will refresh all connections and will display all logged users on Geez0ft Server Activities.



Added buttons are:

The **About** button, which will display the information of Geez0ft Server.



And the **Exit** button, represented by [x]. This button will close Geez0ft Server. In case Geez0ft Server is still serving Gez0ft Client, it will notify you if it should continue closing.



1.3 Dealing with Geez0ft Server Error Messages

Error messages with the Geez0ft Server as the header of the message are the developer-integrated error messages. These are the handled error messages to avoid abnormal program termination. Below are the two kinds of error messages that you may encounter. Written are the descriptions on why they appeared, and the procedures on how to deal with it.

1.3.1 Error Messages in Message Box

Cannot find Geez0ft Disk – Geez0ft is dependent on Geez0ft Installation Disc. This error message can only be encountered if the Geez0ft Installation Disc is not on the CD-ROM Drive. Deal with this problem by placing the Geez0ft Installation Disc on your CD-ROM Drive.

Cannot run Geez0ft Server: The SERVER.DAT and/or SKIN.DAT file is missing. – Geez0ft needs two data files for its operation. This error message appears if wrong CD is in the CD-ROM. Deal with this problem by placing the Geez0ft Installation Disc.

Cannot run Geez0ft Server: Initialization failed. – This error message appears if Server.dat from Geez0ft Installation Disc contains the wrong information. Be sure that your copy of Geez0ft Installation Disc is the same copy you used for installing Geez0ft Instructional Guide.

Geez0ft Server is currently running: Are you sure you want to quit? – If you have accidentally pressed the Geez0ft Server's Exit button while it is actively servicing Geez0ft Client with the virtual room, this error message will be encountered. Deal with it by pressing NO as your response. If in case you need to close Geez0ft Server, just press YES to continue quit application.

1.3.2 Error Messages in Geez0ft Server Activities

ERR#S01: Another server is already running – This error message is encountered once another Geez0ft Server is running. Geez0ft Server is only limited to have one virtual room for Geez0ft Client. Creating another is close to pointless, since Geez0ft Client only needs one virtual room. Deal with this problem by ignoring the message and closing all running Geez0ft Server except for the one, which is currently giving service to Geez0ft Client.

Unable to start server. – This error message will be encountered if any lesson files is/are missing. Which lesson file is missing will be reflected in Geez0ft Server Activities. This error message also takes care of any unnecessary abnormal termination, due to unknown, uncovered application error. This kind of problems is yet to be documented.

Abnormal termination. Server is stopped. – This is caused by another program trying to interrupt the communication line of the Geez0ft Server and Geez0ft Client. Although, in most cases, interruption should be handled by Geez0ft Server.

2. Geez0ft Client

While the Geez0ft Server is considered to be the brain of Geez0ft Instructional Guide, Geez0ft Client works as the heart. It is the main application in terms of Geez0ft Instructional Guide. Through Geez0ft Client, the main content of Geez0ft Instructional Guide is delivered.

2.1 Running Geez0ft Client

To run Geez0ft Client, first, there must be an available virtual room. To create one, please refer to *Using Geez0ft Server*.

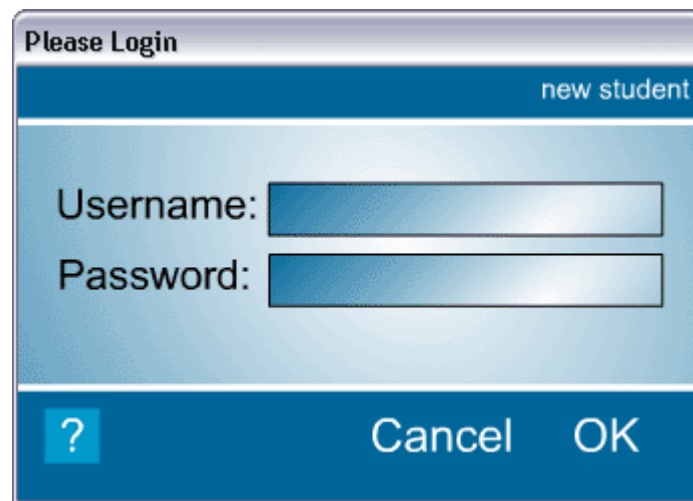
Once a virtual room is available, you can start using Geez0ft Client. It's that easy.

2.2 Using Geez0ft Client

Geez0ft Client consists of three (3) forms. Detailed instruction on how to use these three are written inside Login Form, New User Form, and Main Form.

2.2.1 Login Form

Upon running Geez0ft Client, you will be needed to login. But since you don't have an account yet, you will need to make one. In this case, you need to press *new student* to create a new account. Read the instructions, written in New User Form, on how to make one.



Once you have created your new account, type in the necessary information. This includes *Username* and *Password*. This information pertains to the data you typed-in when you created your new user account. If in case you have forgotten your password, a password recovery tool is available. Access it through the Windows Start Up button. Read the instructions, written in *Geez0ft Recover*, on how to use it.

2.2.2 New User Form

To access New User Form, press the *new student* button located at the top-most, right corner of the Login Form.

There are four (4) data that New User Form will require. These are as follows:

Username – This can be filled by a nickname consisting of alphabets and numbers only – no special characters like, “!@#%&^*()_+”. The length of the chosen username should not be shorter than 5 characters (alphabets or numeric) and not higher than 16 characters.

Password – Like Username, this can be filled by any word, name, or word and name combined. It should consist of alphabets and numbers only – no special characters. The length of the chosen password should not be shorter than 6 characters (alphabets or numeric) and not higher than 16 characters. It is recommended to type in a password that is different to the password you use in on your ATM, bank account or any password that you use for business and/or financial purposes. That is because Geez0ft has its own password recovery tool that can be accessed by anyone who has an access to your computer.

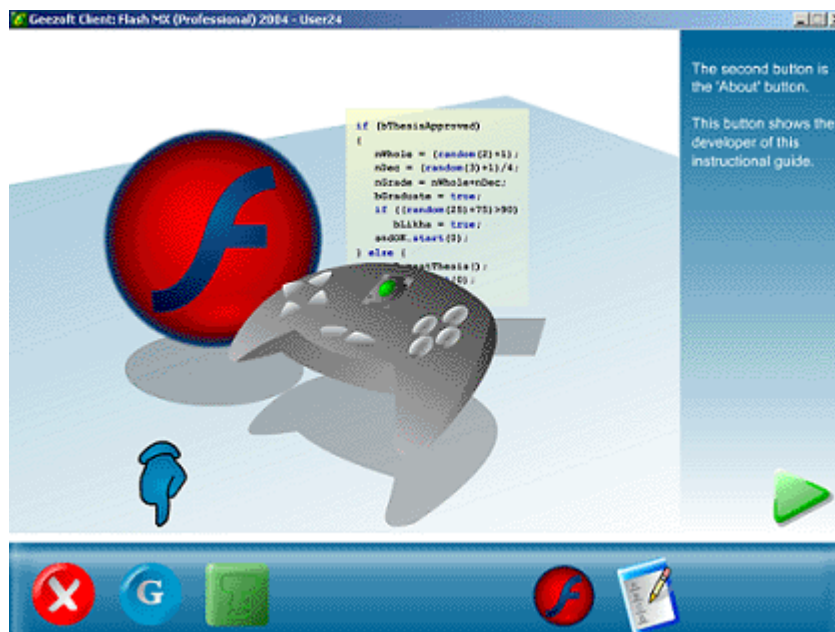
Confirm Password – Whatever is written in your Password, type it in here. This will check if the chosen password that you wrote is a password that you can easily remember. So, it is advisable to type in the password again and do not copy-and-paste the chosen password in it.

Choose Color – For you to be comfortable with Geez0ft Client, Choose Color is created to customize the skin color theme of Geez0ft Client. So, whatever color you chose, surely you will see this color until you finish the all the lessons.

If all data required were supplied, you can press the OK button to submit. A message that tells that you are already registered should prompt you.

2.2.3 Main Form

Once logged, you will be brought to the Main form of Geez0ft Client. This is where you get the real interaction to Flash as you learn it. The Heads-Up Display (HUD) is pretty basic. It is designed to look like Windows XP’s desktop only with big icons – this one will be shown in full screen. All needed interactions to learn Flash and how to use the Main Form will be provided by the lesson.



2.3 Dealing with Geez0ft Client Error Messages

Most errors that happen to Geez0ft Client are related to Geez0ft Server. One of which is the lost of connection to Geez0ft Server. These kinds of problems are to be handle from Geez0ft Server, probably, by your System Administrator (Read *Dealing with Geez0ft Server Error Messages* for further information).

3. Geez0ft Recover

Note: Only the Server Station from the network shall have the Geez0ft Recover installed.

Geez0ft Recover is a password recovery tool for IGF files created by Geez0ft Client. This is in its early stage of development. It does retrieve password but in some cases, it returns a password, with some extra characters added. But this bug can be taken as advantage if someone tried to uncover someone's password. The one who really know what the password was will surely recognize the extra characters added.

3.1 Running Geez0ft Recover

If you turned-on your Workstation by yourself, running Geez0ft Recover would be simple. Just run Geez0ft Recover from Start Up menu.

3.2 Using Geez0ft Recover

You do not need to be a programmer to use Geez0ft Recover. To uncover, retrieve or recover forgotten password, all you need to do is type in your chosen Username then press *Recover Password*. If everything is successful, a *probable password* should have been written in number signs (#). To fully uncover your password, press *Show Password*. This should show the readable password.